

POOR MATCH

Influence of Size:
Mare 55.0%
Stallion 45.0%

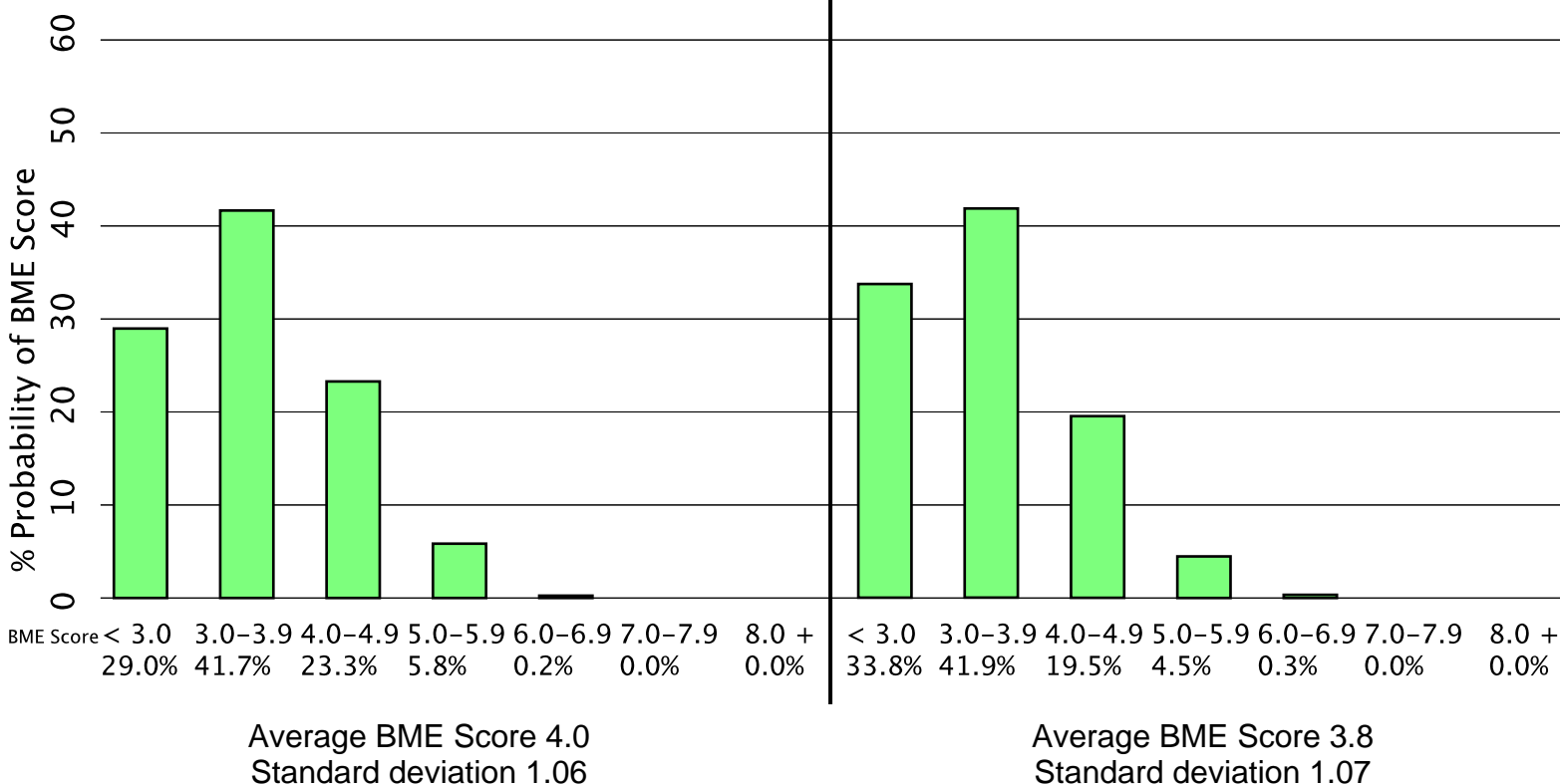
Influence of Pattern:
Mare 45.0%
Stallion 55.0%

Age: 30 months

Most Likely Foal™: BME 5.1

Age: 48 months

Most Likely Foal™: BME 4.7



How To Read The OptiMatchPro® Charts*

1. Look first at the BME Score of the Most Likely Foal™ (MLF). This is the target foal of the mating. A score of 8.0 at 48 months is excellent; 7.5 is acceptable.
2. Check the Average BME Score of the mating. A score of 7.0 is excellent; 6.5 acceptable. This remains a valuable indicator.
3. Check the two highest bars (7.0-7.9 and 8.0+). An excellent match will see the total of these two with 30% or more of the distribution % foals. 15% is acceptable.
4. The smaller the Standard Deviation the more predictable the mating. Less than 0.95 is excellent; acceptable is 1.05, but many breeders are willing to take greater chances if the MLF indicates an exceptional foal.

* This key signifies the "optimal mating". Not all broodmares can achieve this level - even with a "best" match. Breeders should strive for highest possible scores.

841 Corporate Drive, Ste
201
Lexington, Ky 40503
(859) 224-4488
Fax: (859) 224-4546
info@equix.org